

Every child deserves the opportunity to thrive.



## ANNUAL REPORT 2024-2025

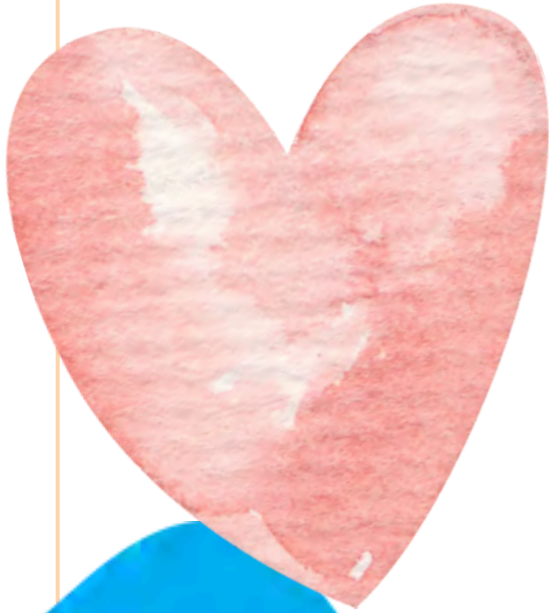




We are empowering parents to be the child's first and most important teacher.

**Elizabeth "Budd" Bell, Founder**

Kids Incorporated of the Big Bend  
Thriving with our communities since 1972.



## Message From the Chief Executive Officer

As the Chief Executive Officer of Kids Incorporated of the Big Bend, it is an honor to share the 2024-2025 Annual Report of the performance of our programming with the Jefferson, Leon, and Madison County communities and stakeholders. Our vision is that all children and families reach their full potential. This ensures that our focus is on early childhood education, family support, and the health of the children and families that we serve.

I am humbled to lead a team that are experts in their field and do an extraordinary job for the improvement of the lives we touch each day. We use information from the outcomes of the children and families to improve our service delivery and ensure that our team has the most up to date training and development possible. The staff are dedicated to all children and families, which allows for maintaining a positive learning environment that is essential for developmental gains.

Thank you to the Board of Directors, Policy Council Members, Staff, Parent Committee Members, community partners, and families for your support in helping to make this program year a success. We are committed to continuing to improve and to providing the services that at risk families in our community deserve.



*La Fonda Heidel*

Chief Executive Officer  
Kids Incorporated of the Big Bend

# Enrollment

Children Served

237

Eligible Children Served

89%



FUNDED

Center-Based

184

Home-Based

12

ENROLLMENT

Children

196

# Health

Received medical exams

100%

95%

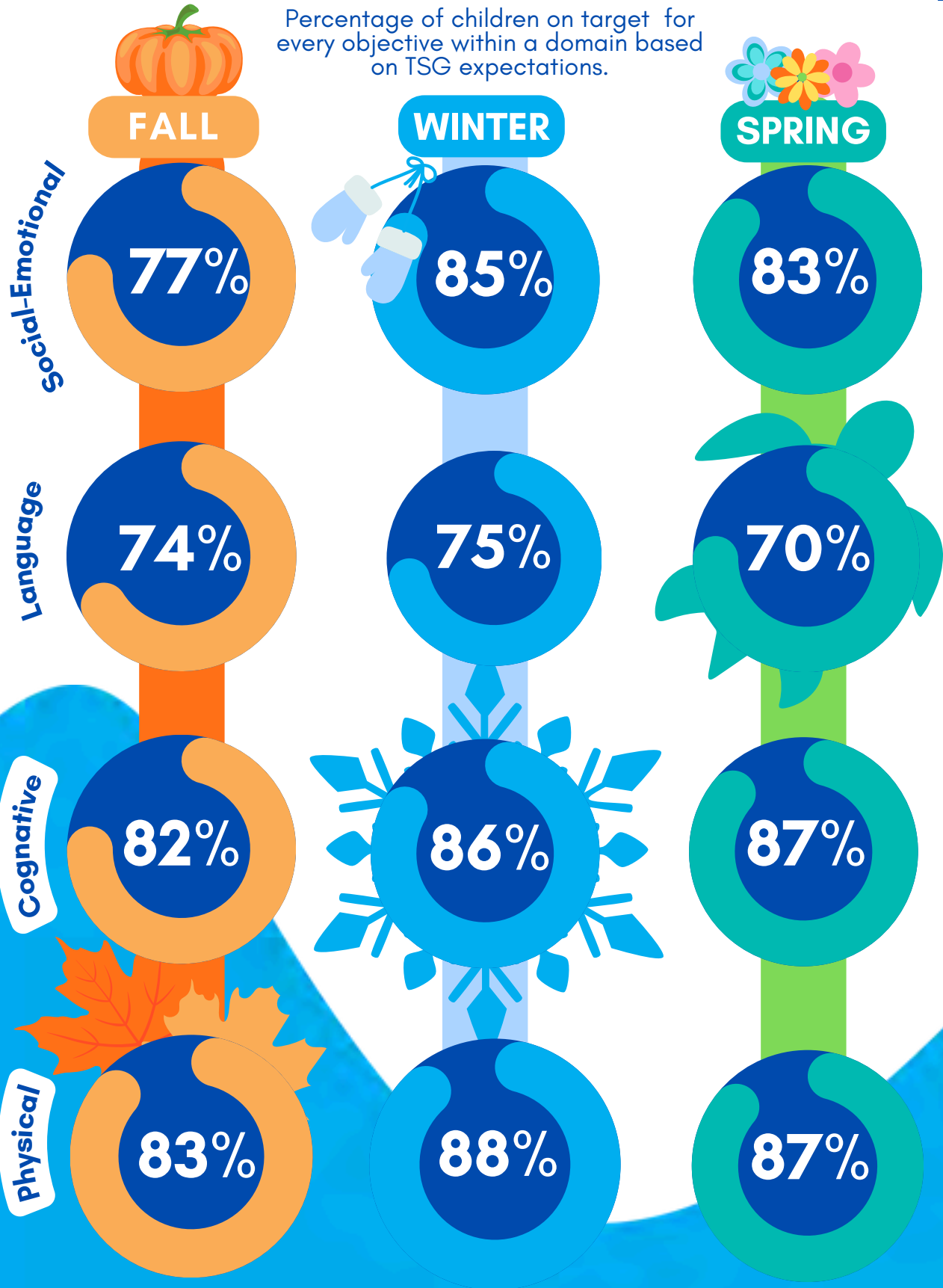
24

Children with an IFSP  
(Individualized Family  
Service Plan)

Up to date on schedule of  
appropriate preventative and  
primary health care including  
oral and dental exams

# School Readiness - Outcomes Mastery

Percentage of children on target for every objective within a domain based on TSG expectations.



# Family Services

199

Families Served

10,258

Peer Card Hours  
(At-Home Educational Activities)

151

Families Attended  
Engagement Events

11,166 Learning Log Hours  
(At home time spent reading to child or children)

"Families are the compass that guides us. They are the inspiration to reach great heights,  
and our comfort when we occasionally falter."

♥ Brad Henry

# Success Story

Meet Essence and True! Essence has been a Kids Incorporated of the Big Bend, Early Head Start parent since August of 2023. She enrolled True into our Bright Days center when she was 17 months old. Since attending Bright Days, True has shown significant progress in her classroom and language development. When True first started Bright Days, she did not interact much with peers and program staff. True's teacher and the Family & Health Services Coordinator both individually discussed these concerns with Essence who had also noticed these behaviors at home. Essence voiced her concerns to True's pediatrician and was referred for an evaluation where she received a medical diagnosis.

Since this diagnosis, True has received weekly early intervention services provided by the Tallahassee Memorial Outpatient Rehabilitation Center that have included occupational and speech therapy. These weekly therapy sessions combined with daily classroom learning activities and routines, along with Essence providing activities and routines at home, has empowered True to achieve substantial growth in her classroom interactions as well as her language development. She now enjoys participating with her peers and program staff in circle time and singing classroom songs.

With Essence being a strong and supportive advocate, True will be successfully transitioning to the Madison County School District ESE Pre-K program.

Written by: Chad Arnold  
Family & Health Services Coordinator

*Congratulations*

Essence and True!



Community

412

volunteers

Non-Federal Share (NFS) Value

\$899,712

Leon | jefferson | madison  
counties of the big bend



"There is no power for change  
greater than a community  
discovering what it  
cares about."

- Margaret J. Wheatley

# Finance

REVENUES		EXPENSES	
Early Head Start	\$6,049,088	Personnel/Benefits	\$3,819,834
County/City Support	\$147,500	T&TA	\$82,360
USDA	\$215,624	Occupancy	\$377,457
ELC	\$293,007	Supplies	\$312,719
Other	\$233,928	Other	\$2,174,501
<b>TOTAL</b>	<b>\$6,939,147</b>	<b>TOTAL</b>	<b>\$6,766,871</b>

“The only wealth in this world is children, more than all the money, power on Earth.”

- Mario Puzo



## Financial Audit

Kids Incorporated receives a financial and compliance audit each year. The most recent Financial Audit Report was completed on December 04, 2024 and expressed an unmodified opinion on whether the financial statements of Kids Incorporated of the Big Bend were prepared in accordance with GAAS (Generally Accepted Auditing Standards).

## Federal Program Monitoring

From May 19, 2025 to May 22, 2025, the Administration for Children and Families (ACF) conducted a Focus Area One (FA1) monitoring review of the Kids Incorporated of the Big Bend Early Head Start program resulting in two findings. A follow up was conducted on October 21, 2025 with the monitoring representative to review processes for addressing the findings.



Look at the family, not just the children.

**Elizabeth "Budd" Bell,  
Founder**

Kids Incorporated of the Big Bend  
Thriving with our communities since 1972.

Highlighting a few of the many engagement opportunities Kids Incorporated brings to the communities we serve.

